

Auditions will be behind a screen. In addition to the excerpts there will also be sightreading.

# Beethoven: Symphony No. 6, Mvt. III

## Lustiges Zusammensein der Landleute

Allegro (♩ = 108)

This page of the musical score contains measures 16 through 246. It features multiple staves for various instruments and piano accompaniment. The score includes dynamic markings such as *pp*, *p*, *sf*, *f*, and *ff*, as well as performance instructions like *cresc.*, *sempre più stretto*, *sempre più f*, and *attacca*. There are also tempo changes, including *Allegro* (♩ = 132) and *Presto*. The score is marked with measure numbers (16, 39, 54, 70, 129, 161, 180, 194, 202, 218, 232, 246) and includes various musical notations such as slurs, accents, and articulation marks. A red bracket highlights a section of the bass line between measures 180 and 202.

# Symphony No. 5

Allegro non troppo ♩=126

Movement 1

Dmitri Shostakovich

22 *ff* *ff*

(8<sup>va</sup>)

23 2

24 *ff*

25 *ff* ♩=132

26

G E D D G

G

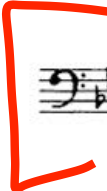
A red bracket on the left side of the page encompasses measures 22 through 26.

## Movement 2

Allegretto ♩=138

48 *ff*

49

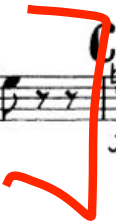


First staff of music with dynamics *p*, *cresc.*, and accents *V V*.

Second staff of music with dynamic *mf* and *p*.

Third staff of music with dynamics *p*, *cresc.*, and *mf*.

Fourth staff of music with dynamic *cresc.* and a *ff* marking.



Fifth staff of music with dynamic *f*.

Sixth staff of music with dynamic *f*.

Seventh staff of music with dynamic *ff*.

Eighth staff of music.

D

Ninth staff of music.

Tenth staff of music.

Eleventh staff of music.